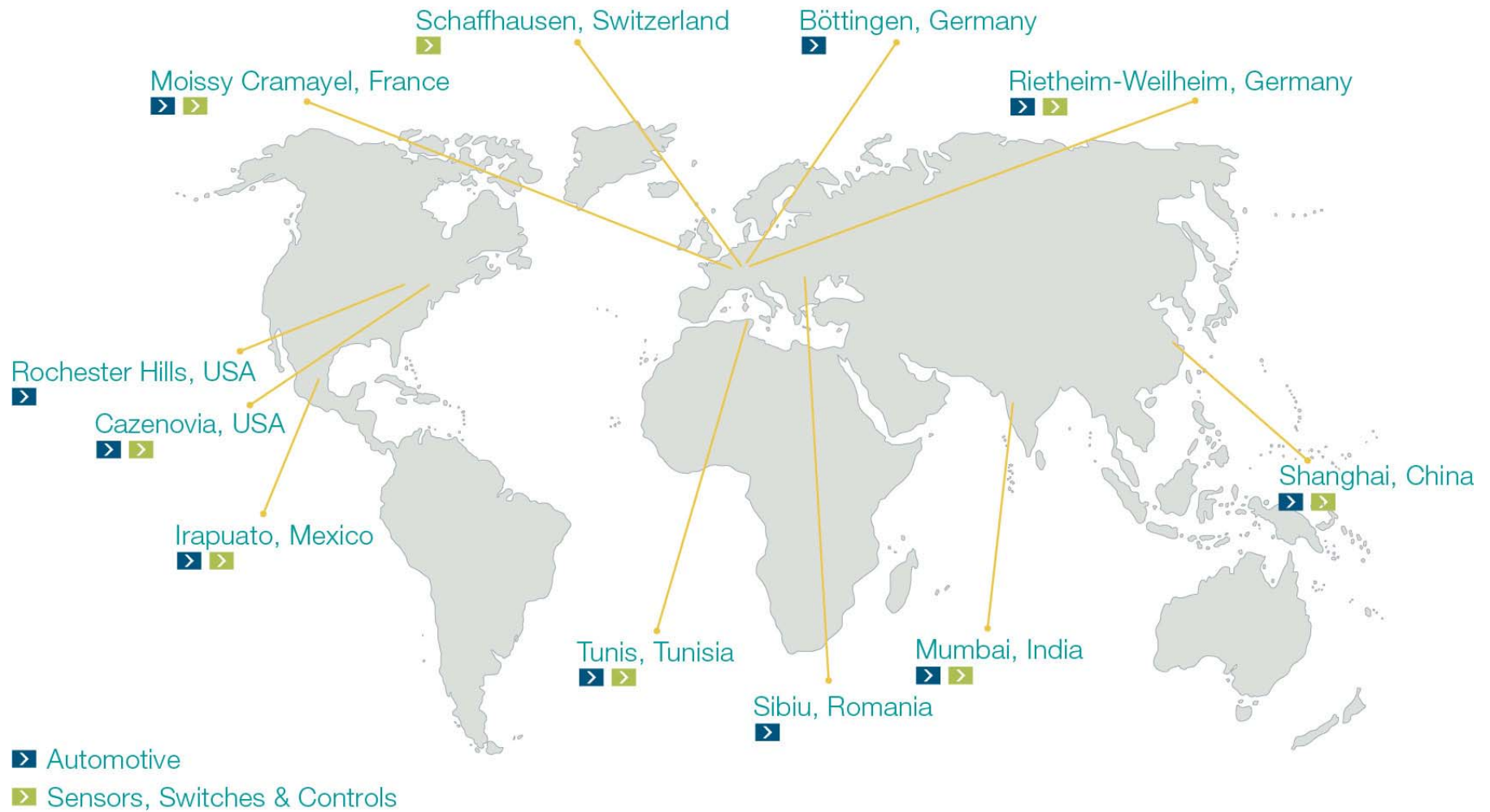


MARQUARDT
SCHALTSYSTEME SCS
SIBIU



MARQUARDT

Locations according to Business Units



Products Business Unit Automotive

➤ DRIVE AUTHORIZATION SYSTEMS



➤ OPERATING COMPONENTS



➤ DEVELOPMENT TRENDS



- Electronic ignition starter switches, electronic keys, electronic steering locks, Keyless antennas, door handle sensors and control devices
- Control panels for gear shift, seat, light, door, roof, infotainment, steering wheel, electromechanical parking brakes as well as operating switches
- Applications and modules, snap-action and micro-signal switches, tact switches
- **NEW PROJECTS:** BlueID-Drive, Touchpads, Push 'n' Drive

Products, Business Units, Switches, Sensors & Controls

➤ SOLUTIONS FOR
HOUSEHOLD APPLIANCES



➤ SOLUTIONS FOR
BUILDING TECHNOLOGY & HVAC



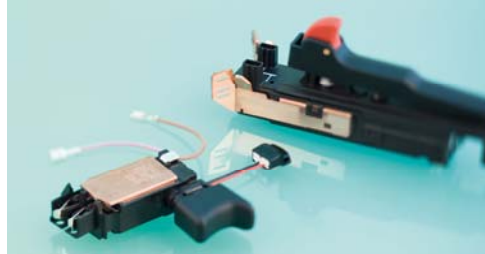
➤ STANDARD SWITCHES FOR INDUSTRIAL
AND ELECTRICAL APPLICATIONS



➤ SWITCHES AND SOLUTIONS FOR
OFF-ROAD VEHICLES



➤ SWITCHING SYSTEMS FOR
ELECTRIC POWER TOOLS



➤ SOLUTIONS FOR
CLEANING AND DRIVE APPLICATIONS

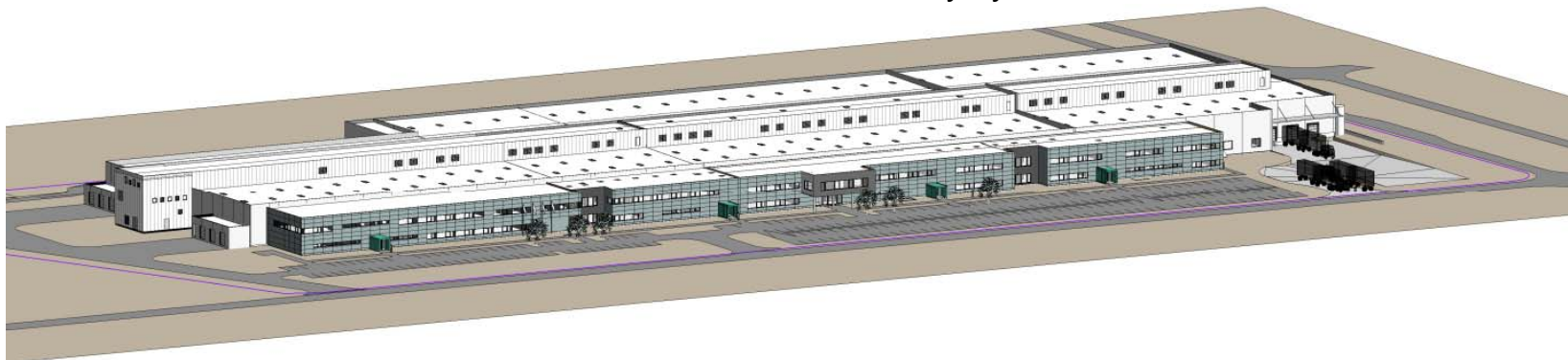


- Rocker, toggle, pushbutton, foot switches, dust and water protected switches, snap-action switches, micro-signal switches etc.
- Sensors for measuring pressure, distances, humidity, flow, turbidity etc.
- Control and regulation electronics (AC, DC, EC)
- **NEW PROJECTS:** Rocker switch 3250, pressure sensor SINUS, ECO switch, foot switch 2420

Marquardt in Romania



- Employees (09.2013): ~ 1.400
 - Direct-productivity: 750
 - Indirect-productivity: 550
 - R&D: 110
- 56.600 m² total surface
- ~ 31.600 m² of surface for production, administration and social rooms
- Modern building technique for best working conditions
 - Fully air-conditioned
 - Installation of 40 km water pipes in the floor of the production to cool or heat the building (first time in Romania)
 - Heat recovery system



Milestones

- April 2004 Decision for the location Sibiu, Romania
- December 2004 Presentation general building plan
- May 2005 Issue of building permission
- **June 2005** Start of construction
- November 2005 Topping-out ceremony in Sibiu
- April 2006 Completion of building / Start fitting out building
- **May 2006** Start of production
- May 2007 ISO/TS 16949 certification
- **January 2008** Start of development activities
- July 2009 Decision for extension of the plant were made
- September 2009 Planning for Extension started
- July 2010 Completion of production hall (3500m²)
- End of 2010 Completion of office and sanitary building
- August 2012 Completion of Extension No. 3
- **May 2013** Inauguration of Final Extension No. 4

Customers



DAIMLER



Marquardt in Sibiu – new startups



- **Mercedes S-Class**
 - Multifunctional steering wheel switch-module



- **VW Golf 7 GTI**
 - Multifunctional steering wheel switch-module



- **Mercedes C-Class**
 - Multifunctional steering wheel switch-module

Marquardt in Sibiu – new startups



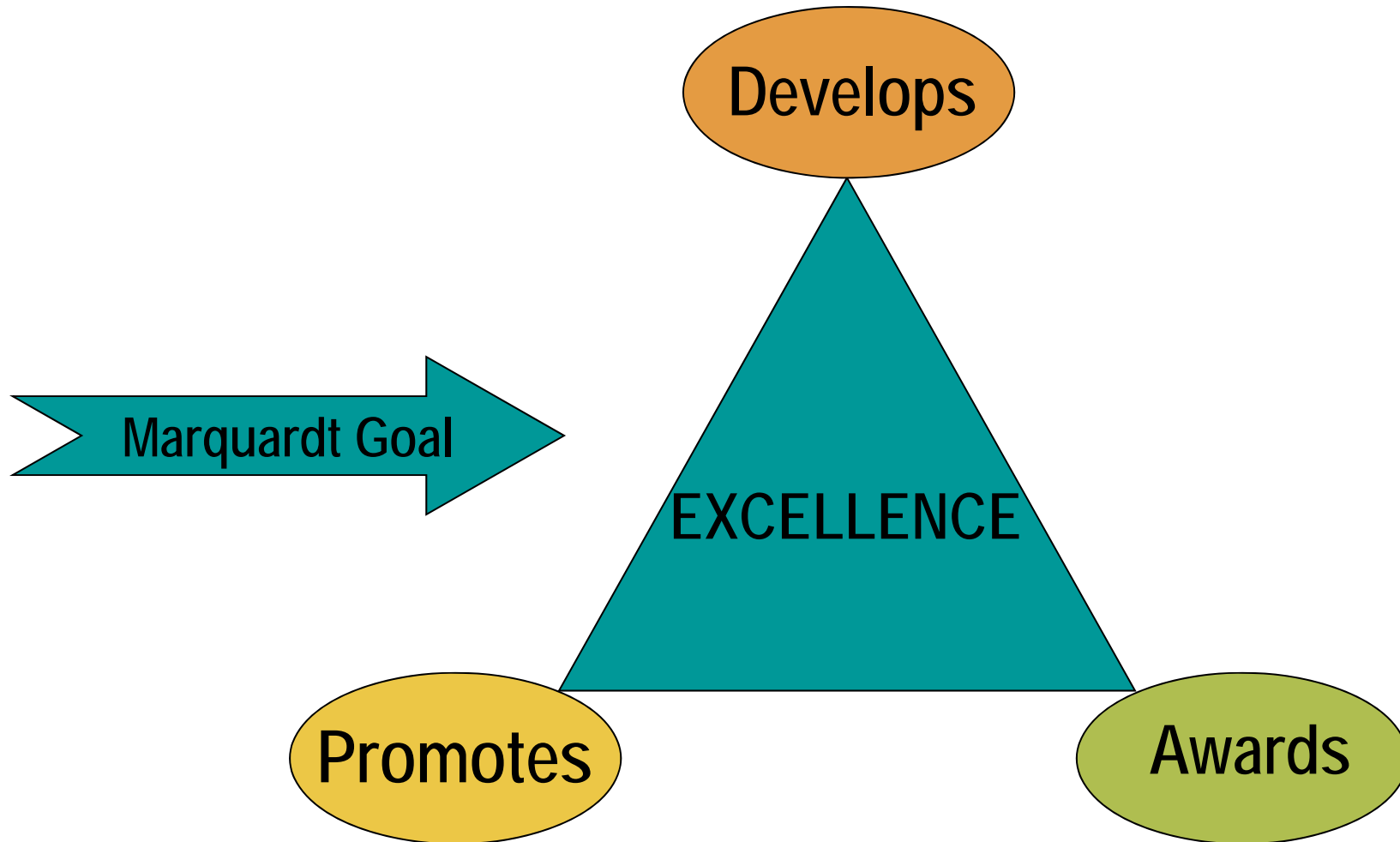
- **Audi Q7 and A4**
 - Drive authorization system



- **Chrysler LX and Jeep WK**
 - Electronic steering wheel lock



- **BMW Series 5**
 - Lenkradschaltpaddel



MARQUARDT promotes EXCELLENCE

- Equipment of 2 Laboratories of the '*Lucian Blaga*' University Sibiu;
- Electronic and RobotX competitions together with the '*Lucian Blaga*' University Sibiu 2013;
- Hardware and Software Engineering Competition 2013.

➤ LABORATORIES



➤ COMPETITION



MARQUARDT promotes EXCELLENCE

➤ STUDENTS WORKSHOP 2014

➤ OBJECTIVE

- Promotion of the interaction among students of the 3rd and 4th year of study
- Indicate students from various fields of the company
- Find students interested in training
- Identification of potential candidates for the open positions

➤ DEPARTMENT

- Department of **Quality Assurance**
- **R&D – Mechanical Design Center**
- **R&D – SW Development & SW Test Centers**



MARQUARDT promotes EXCELLENCE

➤ EXTRACURRICULAR COURSES

➤ 1. Mechanical Development department

- Tematica: “Plastic materials basics. Design rules for Plastic materials”
- Profesori universitari propusi: N. Turcu, M. Bibu
- Period: 2013 – 2014

➤ 2. Software testing and development department

- Tematica: “Automotive embedded applications“
- Profesori universitari propusi: N. Beriliu, M.Breazu
- Period: 2013 –2014

➤ 3. MVP department

- Lean Manufacturing in Automotive & Q- Management
- Trainer MQ: Virginia Iuga
- Period: 2013 –2014



MARQUARDT promotes EXCELLENCE

➤ PRACTICE STAGES 2013/2014

➤ Majors:

- TCM, Mechanics, Applied Electronics, Electromechanics
- Economical Engineering in Mechanics, Computer Science
- Mechatronics and Industrial Engineering.

➤ Average number of interns:

- ~ 80.

➤ Internship departments:

- R&D Center: SW-D; SW-V, MD;
- Quality;
- Production (Assembly, Molding, Electronics, Microswitches, Lacquering).







**thanks and welcomes you to the
world of Engineering!**